



ALTAIR

ONLY FORWARD

Altair PolEx for ECAD 2025

Install Guide

Updated: 11/20/2024

altair.com

Contents

- 1. Introduction..... 3
- 2. System Requirements 3
- 3. Install Altair PolIEx for ECAD..... 4
- 4. Uninstall Altair PolIEx for ECAD..... 6
- 5. Going Forward 6

1. Introduction

This installation guide provides introductions for the Altair PolIEx for ECAD installation on supported platforms. Altair PolIEx for ECAD is available for users with limited functionalities.

You should visit <https://www.altair.com/pollex-for-ecad> to apply for and download the Altair PolIEx for ECAD.

For additional questions, please contact our PolIEx for ECAD support team at pfasupport@altair.com.

2. System Requirements

2.1. Supported Platforms

Platforms		
OS	Version	Architecture
Windows	10 and 11	X86_64

2.2. Hardware Requirements

Hardware Information	Minimum requirements	Recommended requirements
CPU	Intel® Core™ i5 processor or equivalent	Intel® Core™ i7 processor or higher
Memory	4 GB	8 GB (higher recommended)
Complete Install Disk Space	3 GB	3 GB (higher recommended)
Display	1920 x 1080 resolution	1920 x 1080 resolution with true color
Graphics Hardware	OpenGL supported graphics card with an install driver allowing usage of the OpenGL functionality Supporting DirectX 10 or higher	Recommended to use NVIDIA and AMD GPUs
Miscellaneous	Adobe® Reader® Microsoft® Excel® (32 or 64-bit)	

3. Install Altair PolIEx for ECAD

Preparing to Install the Altair PolIEx for ECAD

What you need to install and successfully run Altair PolIEx for ECAD:

- Altair PolIEx for ECAD installer for Windows platform.
- If you use Altium Designer, you need to install the **AltairPolIEx** extension in the **Extensions & Updates** of Altium Designer.

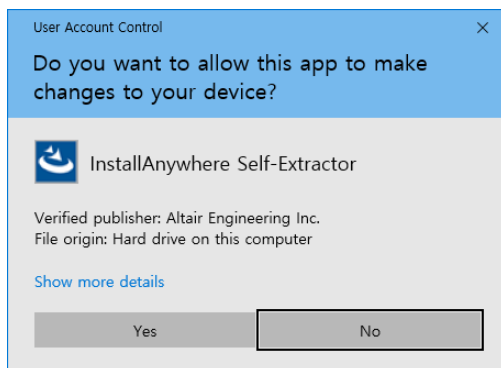


Note: Altair PolIEx for ECAD is available only on a Windows machine.

Starting the Installation Process

The installation process starts by extracting the software.

1. Double-click the downloaded installation file.
2. If user account control (UAC) is enabled and you are an administrator, a prompt displays showing the Altair Engineering, Inc. digital signature for elevated permissions. Click **Yes** to continue.



3. The splash screen is displayed while the installer is loaded.

Viewing the License Agreement

The **License Agreement** panel is displayed.

1. Read through the license agreement.
2. Click **I accept the terms of the License Agreement** to continue with the installation.
3. Click **Next** to continue.

Introduction the Installation Wizard

The **Introduction** panel is displayed.

1. Read the introduction.
2. Click **Next** to continue.

Choosing the Install Folder

The **Choose Install Folder** panel is displayed.

1. The default install folder is C:\Program Files\Altair\<version> and Altair PolIEx for ECAD will be installed in a PolIExForECAD subfolder.
2. Click **Next** to continue.

Specifying the Location for Start Menu Shortcuts

The **Change Shortcut Folder (Local)** panel is displayed.

1. Specify the folder name that will contain the start menu shortcuts.
2. [Optional] Specify the suffix string to be added to the shortcuts.
3. Click **Next** to continue.

Verifying the Pre-Installation Options

The **Pre-Installation Summary** panel is displayed. The summary contains details about the pending installation.

1. Review the installation details.
2. Click **Install** to continue.

Viewing the Installation Progress

The **Installing Altair PolIEx for ECAD** panel is displayed.

View the installation progress.

Exiting the Installation Wizard

The **Install Complete** panel is displayed.

1. Once the installation is complete, the **Install Complete** panel is displayed.
2. Click **Done** to exit the installer.

4. Uninstall Altair PolIEx for ECAD

1. From the Control Panel, click **Programs > Programs and Features > Uninstall or change a program** to launch the PolIEx uninstaller.
2. Double-click **Altair PolIEx for ECAD <version>**.
3. Follow the prompts to proceed with the uninstallation.

5. Going Forward

Altair PolIEx for PolIEx tutorial is available with a sample design and a template for DFM.

To access the tutorial, you need to run Altair PolIEx PCB.

- From the start menu, click **PolIEx PCB <version>**.
- For more information, please visit the [Altair Community](#).

For additional questions, please contact our PolIEx for ECAD support team at pfasupport@altair.com.