

 **RELEASE NOTES**

Altair[®] Inspire[™] 2023.1

New Features and Enhancements 2023.1

Enhancements

- Improved the solution handling of motion contact problems, allowing for better performance and result quality. [INSPIRE-36240]
- Units are now supported for .3mf files. [INSPIRE-41464]

Resolved Issues

- Prior selections are now retained when you open the Section cut tool while using other Geometry tools. [INSPIRE-33338]
- In the Print3D ribbon, the surface orientation feature is disabled when working with an optimized model. [INSPIRE-33612]
- In the Print3D ribbon, the body-fitted mesh option is disabled when working with an optimized model. [INSPIRE-33671]
- Resolved an issue in the Print3D ribbon where run status bar was not working properly when running an analysis on a model with a body-fitted mesh while another analysis using a voxel mesh was in progress. [INSPIRE-33684]
- Resolved an issue in the Print3D ribbon where, in the Binder-Sinter context, viewing an analysis before it was finished would cause the Analysis Explorer to show incomplete results even after the analysis was finished. [INSPIRE-41332]
- Resolved an issue in the Print3D ribbon where, in the Binder-Sinter context, the Check Stability feature was not working properly. [INSPIRE-41260]
- Improved box/window selection in some contexts. [INSPIRE-36001]
- Resolved slow tab switching. [INSPIRE-32430]
- Section cuts are now capped for fluids results. [INSPIRE-40719]
- Fixed a crash when loading a model from the Run History. [INSPIRE-33452]
- The Snap to Visible option is now snapping only to what is visible. [INSPIRE-33450]
- Resolved a regression in the Flexible Body tool where the Min/Max and Callouts options weren't working with MMKS model units. [INSPIRE-35671]

Known Issues

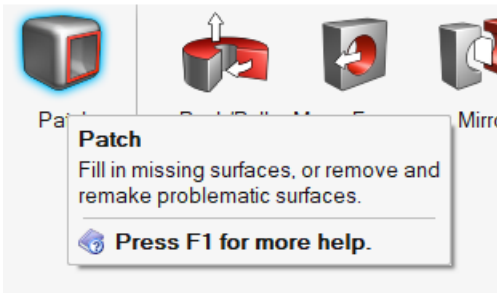
- Pre-highlighting issues in post-processing results [IN-24980]
- Modifying edge fillet leads to selection of additional edges [IN-27932]
- View Cube doesn't appear correctly using AMD graphics card [IN-32550]

Learn More About Inspire

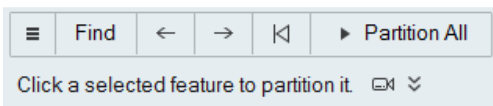
You can learn more about new and existing features in Inspire using the following resources:



In-Application User Assistance

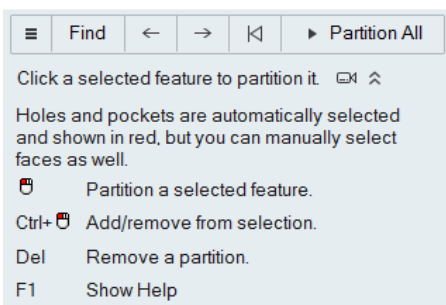
Inspire provides two types of user assistance. **Enhanced tooltips** appear when you hover over icons and other features. They describe what the tool does.



Workflow help appears when you select a tool that opens a guide bar or microdialog. The text prompts you what to do next.

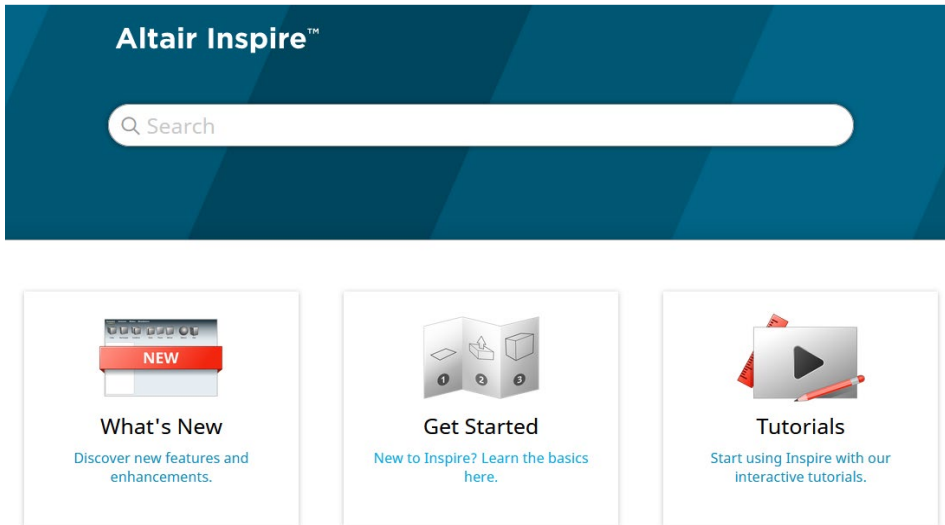


Click  to view additional tips and shortcuts. Some tools also include a video .

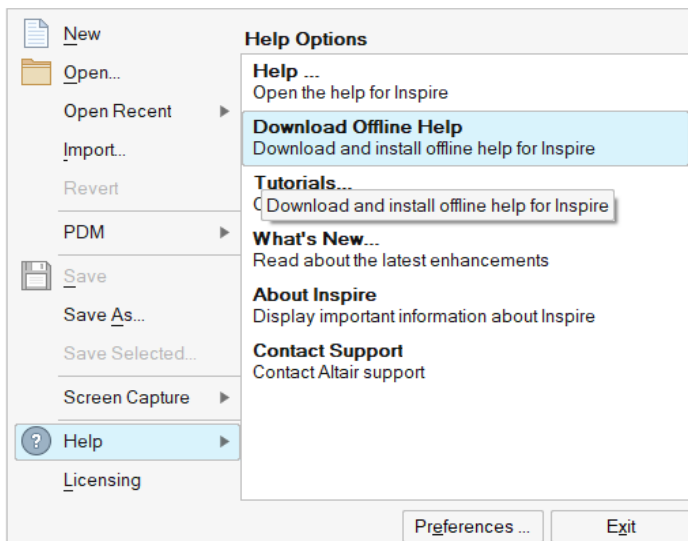


Online and Offline Help

Press F1 or select File > Help > Help to view the online help.



You can download an offline version by selecting **File > Help > Download Offline Help**. An internet connection is required to download.



Supported Languages

The language for the user interface and online help can be changed in the Preferences under Workspace > Language. User interface text is available in English, Chinese, French, German, Italian, Japanese, Korean, Portuguese, and Spanish.

The online and offline help is available in English at the time of release, and in Chinese, Japanese, and Korean generally 1 to 2 months after release. If a language is selected in the Preferences that is supported for the user interface text but not for the help, the English help is shown. Similarly, if an unsupported language is selected in the Download Offline Help dialog, the English offline help will be downloaded instead.