

# Altair® Inspire Form™ 2026.0

RELEASE NOTES

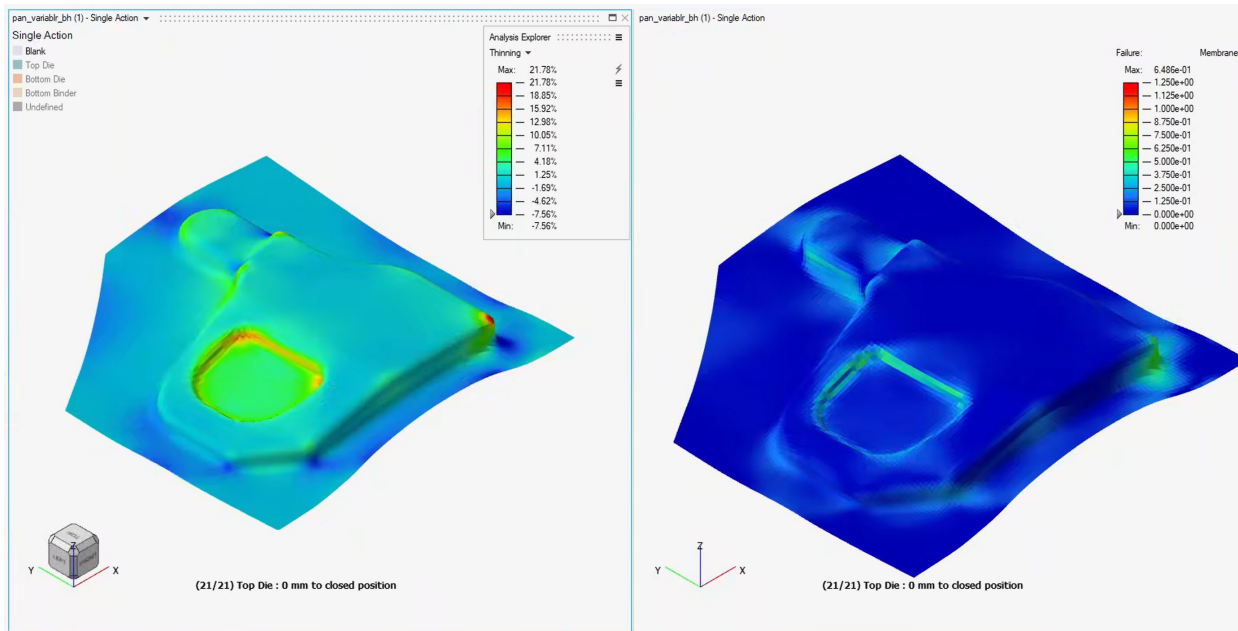
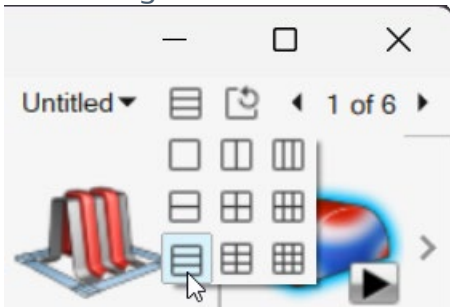
# NEW FEATURES

## General

### Multiwindow Results

Visualize feasibility and tryout analysis results with multiple modeling windows that show the results of each run.

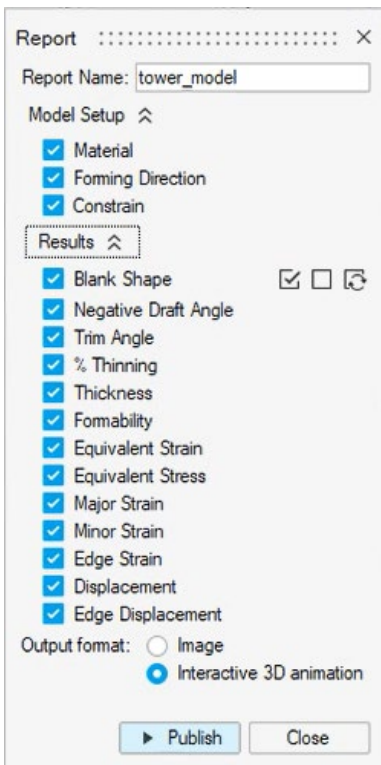
Use the **Set Page Layout** button in the top-right corner of the workspace to choose how windows are arranged.



For more information, see [Multiwindow Results](#).

## Report Generation

When generating reports, select **Interactive 3D animation** to embed H3D video files in the report.



Click the **Click the Image** to animate link to play a video.

## Direct Links to Tutorial Models

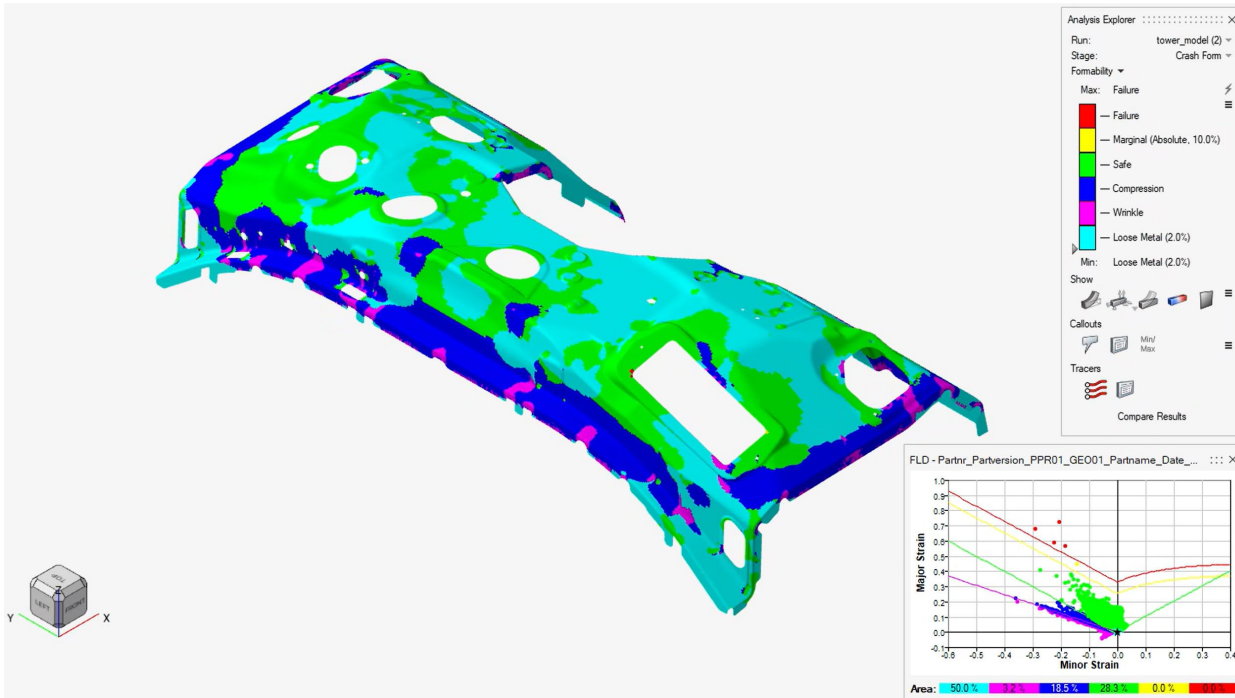
Tutorials in the application help now include direct links to models that are used by the tutorials to help you follow along.

For more information, see [Tutorials](#).

# Feasibility

## Area in Formability Plots

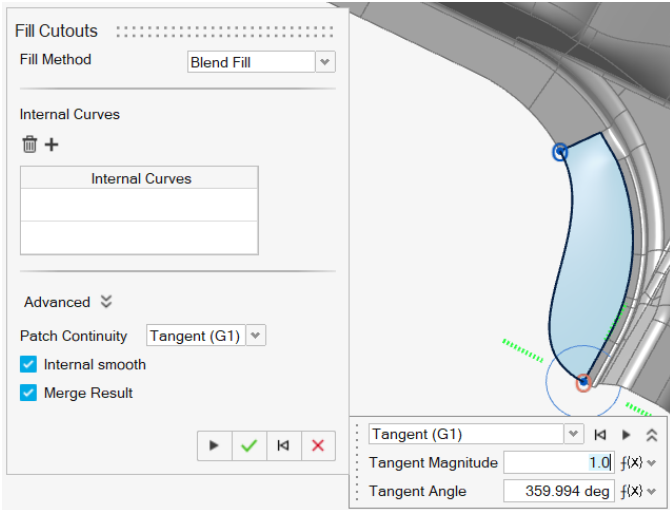
When viewing Formability results in the Analysis Explorer, the **Area** display shows the percentage of the model's surface area that is represented by each status.



For more information, see [View Feasibility Results](#).

# Tangent Magnitude and Angle in Fill Cutout

When finding and filling cutouts, the Fill Cutout tool now includes **Tangent Magnitude** and **Tangent Angle** controls to allow you to adjust the blend curve at the selected point.

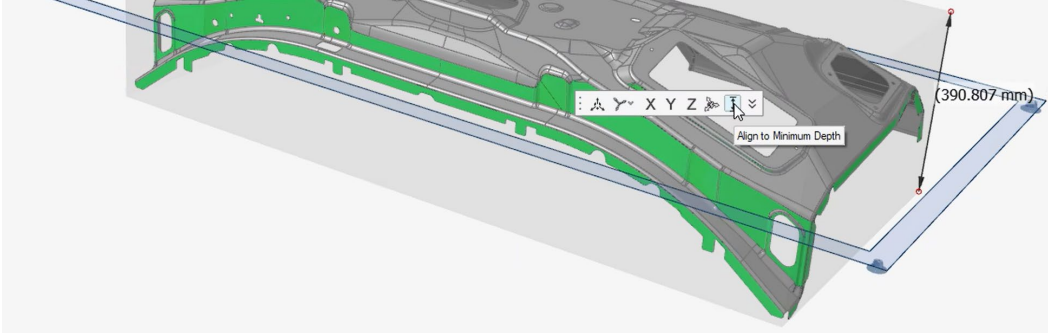


For more information, see [Fill Cutout](#).

## Minimum Draw Depth

Draw direction is now determined based on the draw depth, and you can define addendum variables at different locations for nesting.

Select **Align to Shortest Edge** to set the draw depth to match the shortest edge of the minimum bounding box that contains the selection.



For more information, see [Orient the Stamping Direction](#).

## Stamping Direction History

When orienting the stamping history, you can click the **Stamping Direction History** satellite to display the Stamping Direction History dialog, where you can double-click a history point to return to it.



^	Theta X	Theta Y	Theta Z	Draft Angle
	-95.89	-71.53	-54.62	0.0
	145.60	-12.67	-73.29	82.3
	145.37	-11.69	-73.42	83.3
	-82.99	-67.18	-42.53	0.0
	-111.21	18.41	-169.43	87.0

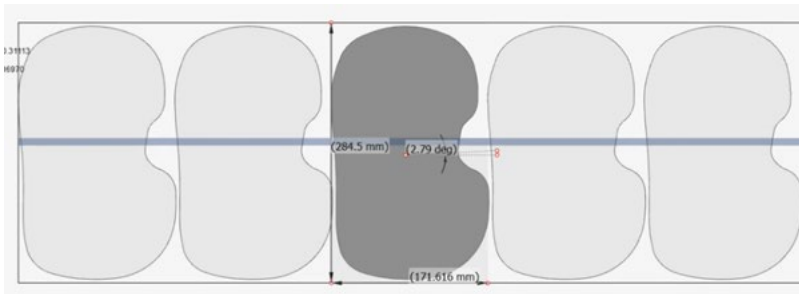
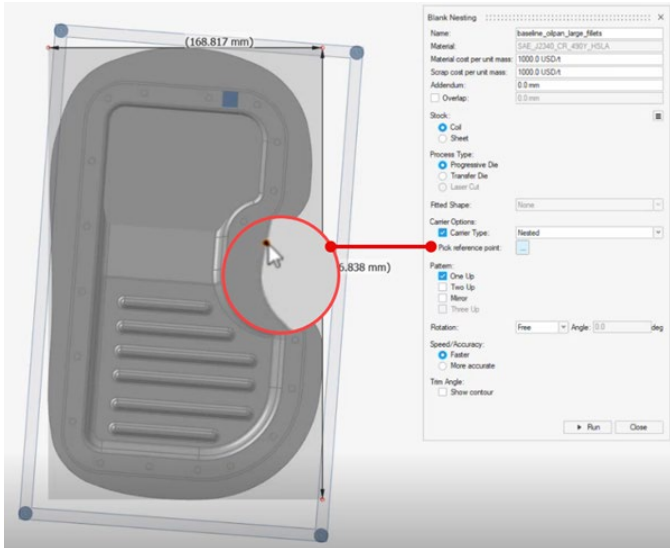
Assign Delete Delete All Close

For more information, see [Orient the Stamping Direction](#).

# Blank Nesting Carrier Position Control

The Blank Nesting guide panel has added a **Pick reference point** control.

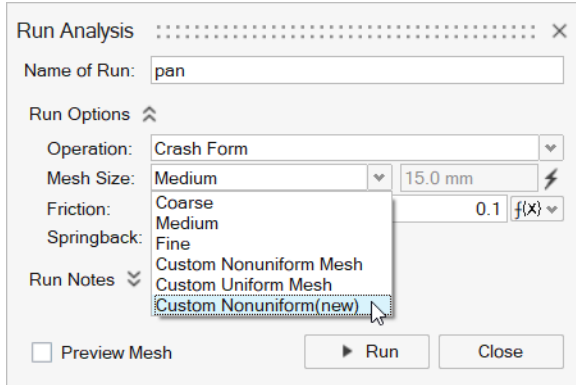
If you selected **Nested** or **Double-Sided and Nested** from the **Carrier Type** dropdown, you can click the **Pick reference point** ellipsis button and pick a reference point on the model.



For more information, see [Blank Nesting Analysis](#).

## New Mesh Option

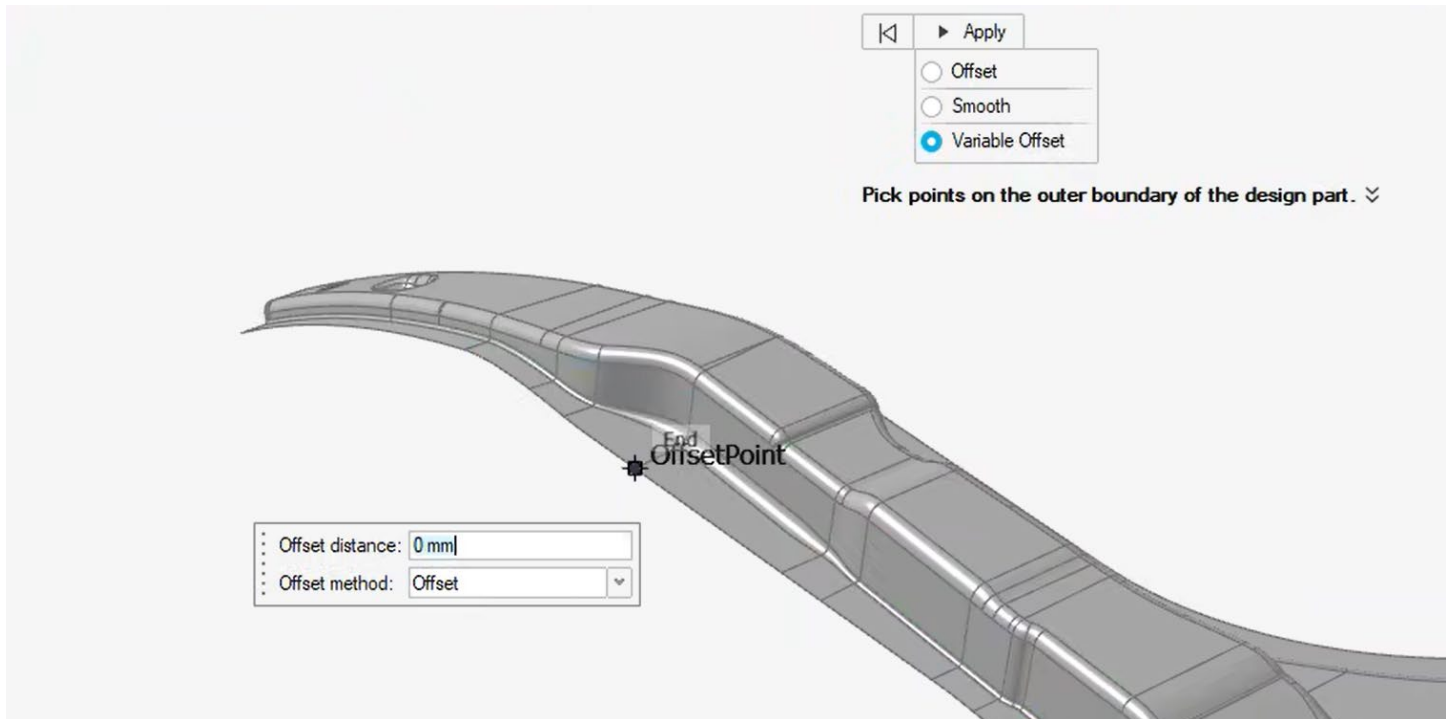
When running Formability analysis, and new **Mesh Size** has been added. Choose **Custom Nonuniform (new)** to use a new strategy that provides better mesh control.



For more information, see [Feasibility Analysis](#).

## Variable Offset in Blank Layout

When modifying the blank shape, you can now select **Variable Offset**, pick points around the boundary, and type a distance and offset method in the microdialog to offset the perimeter of the blank by the specified amount.



For more information, see [Modify Blank Layout](#).

# Added Python Support to Feasibility Parameters

Added Python support for the following items:

- Blank holder force can be user defined as a low, medium, or high force.
- Drawbead can be user defined as a low, medium, or high force.
- Pins can be defined as fixed or sliding pins along their length.
- You can set the meshing type and element size.
- You can include or exclude springback.

For more information, see **File > Help > Python API Demos**.

## Tryout

### Solver Precision

When running a tryout analysis, you can now select **Hybrid** from the **Solver Precision** dropdown for high speed and high precision.

Run Analysis

Name of Run:

Run Options

Mesh Size:   ⚡

Adaptive Level:

Solid Layers:

Start Operation:

Advanced

Animation Frames:

Stroke Range	Stroke Increments
5 mm	1 mm
50 mm	5 mm
200 mm	10 mm

Integration Points:

Solver Precision:

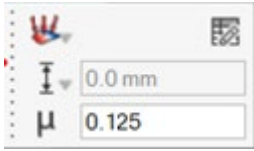
Run Notes

Test run

For more information, see [Run a Tryout Analysis](#).

## Apply Force Function to Top and Bottom Binder

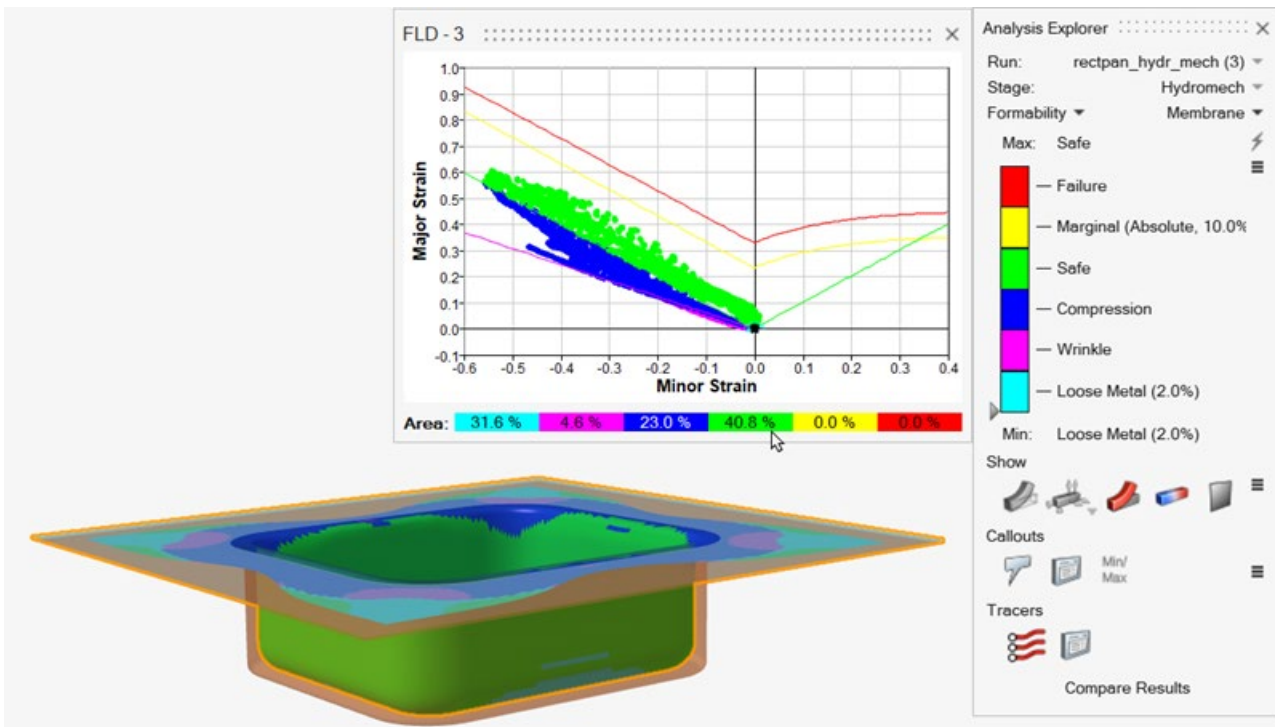
When configuring the top and bottom binder, you can click the **Force Table** button to edit stroke and magnitude when using Apply Force Function.



For more information, see [Bottom Binder](#) and [Top Binder](#).

## Area in Formability Plots

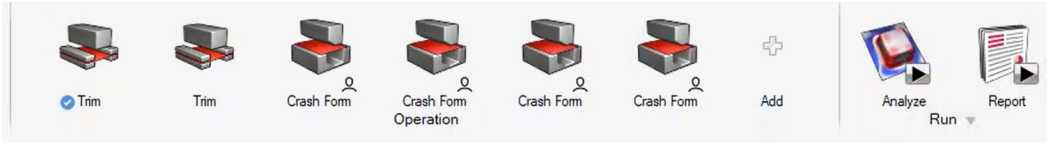
When viewing Formability results in the Analysis Explorer, the **Area** display shows the percentage of the model's surface area that is represented by each status.



For more information, see [View Tryout Results](#).

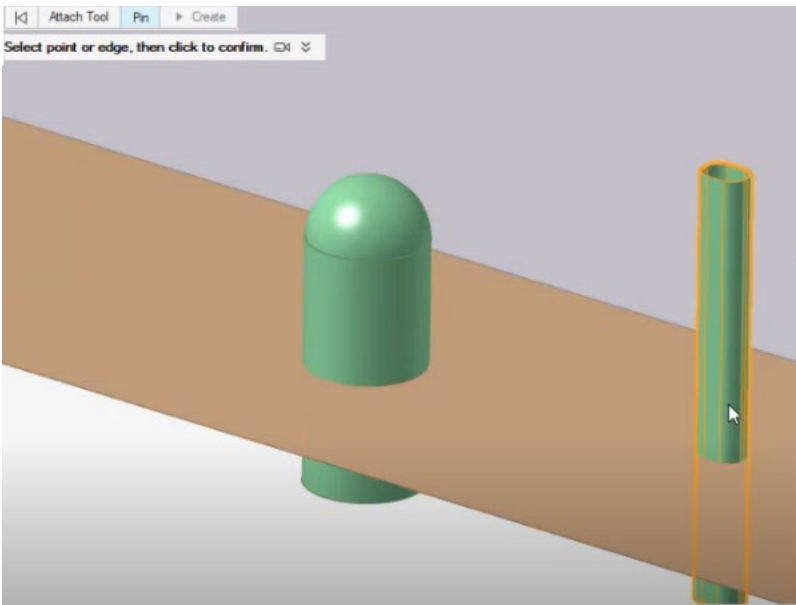
## Trim Operations

Added support for trimming and piercing as the first stage in a tryout process. Trimming is performed in Inspire Form.



## Object Selection for Pins

When creating pins in a tryout process, you can now select an existing object to use it as a guide pin.



For more information, see [Configure a Pin](#).

## Write Analysis Results to H3D Files

You can now save analysis results to H3D files to facilitate data interchange.

- Right-click the **Run** dropdown and select **Save Run as H3D**.

For more information, see [View Feasibility Results](#) or [View Tryout Results](#).

## Comparing Callouts

When comparing tryout results, if a callout does not exist at the same location across runs, the nearest callout will be displayed for comparison.

For more information, see [Compare Results](#).

# RESOLVED ISSUES

---

INSFORM-xxxx

Lorem Ipsum

---

# KNOWN ISSUES

The following known issues will be addressed in a future release:

- On October 14, 2025, Microsoft Windows 10 reached its end of support. Following Microsoft's messaging, all Altair 2026.0 applications no longer support Windows 10. Altair is providing this information to help our customers accommodate this change. Altair 2026.0 supports the Windows 11 operating system, along with our other Linux-based operating systems. Please contact your local Altair support team if you have any questions or concerns.
- Windows does not support Unicode characters in folder names by default. When using a run folder that contains Unicode characters, please enable **Beta: Use Unicode UTF-8 for worldwide language support** in the Windows system locale settings.
  - Select Start → Settings.
  - In Settings, select **Time & language**.
  - Select Language & region.
  - Select Administrative language settings.
  - Click Change system locale.
  - Select the **Beta: Use Unicode UTF-8 for worldwide language support** checkbox.

