

▶ RELEASE NOTES

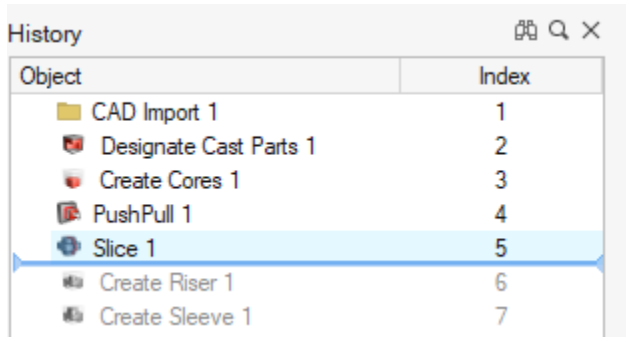
Altair[®] Inspire[™] Cast 2023

New Features and Enhancements 2023

Altair Inspire Cast 2023 includes the following new features and enhancements.

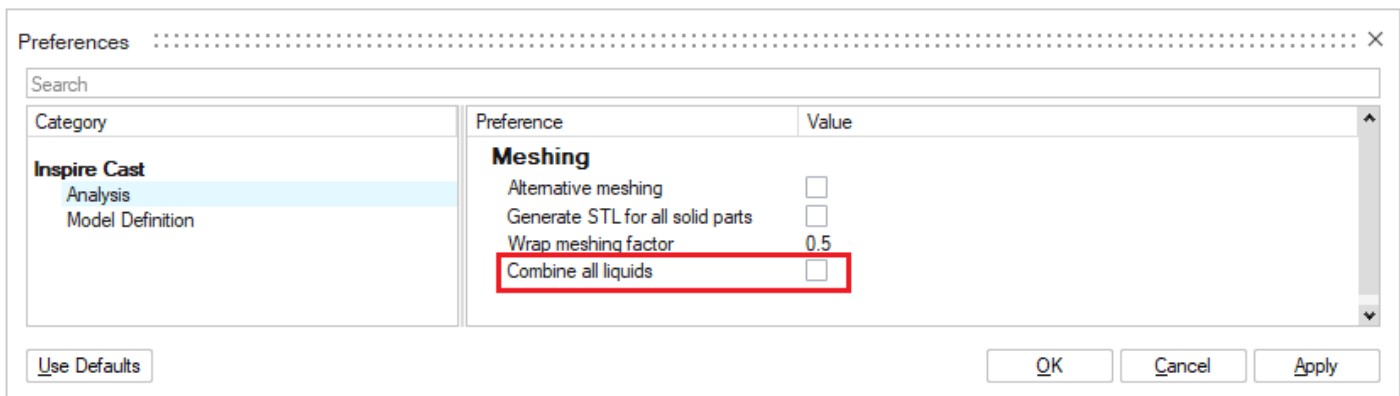
Construction History Integration

Inspire Cast now includes a construction history tool. All the actions and components generated inside the application will be stored and can be edited through the construction history browser. To activate this option press F6.



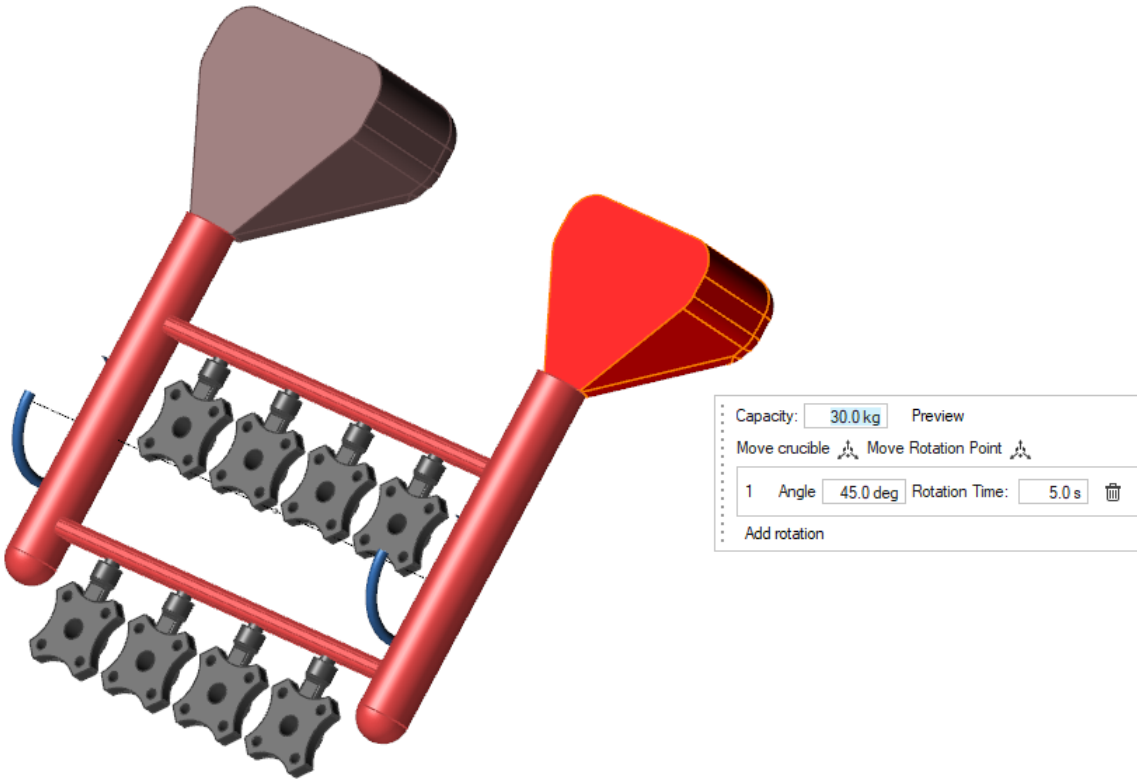
Combine All Liquids

This option will allow users to combine all the liquids (cast part, runner, overflows, risers...) as one. That will help us avoid meshing issues between liquids.



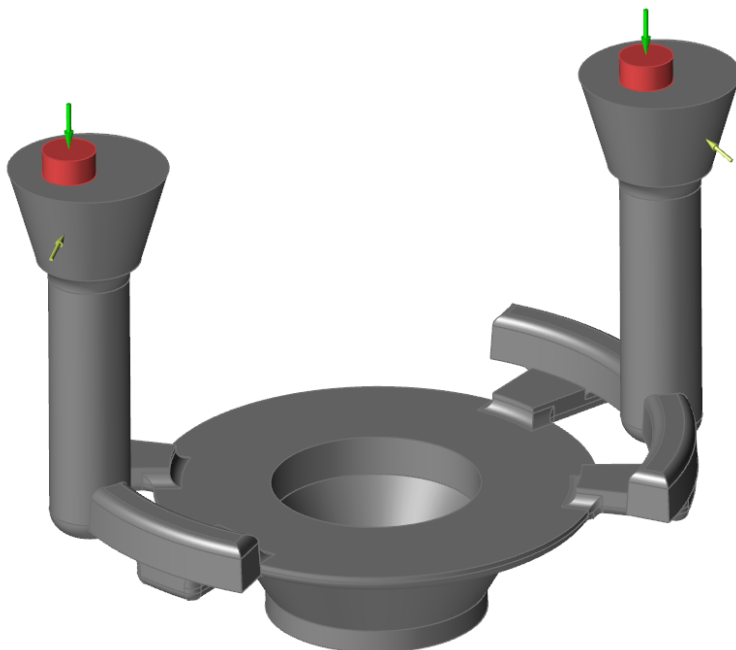
Multi Cups in Tilt Pouring Analysis

Now it is possible to perform a gravity tilt pouring analysis using multiple cups with different volumes at the same time.



Multi Liquid Level

Liquid level allows users to control the flux entering into the mold by keeping the liquid level in a particular point. Now, you can also control the liquid level in multiple positions in case you have more than one sprue.

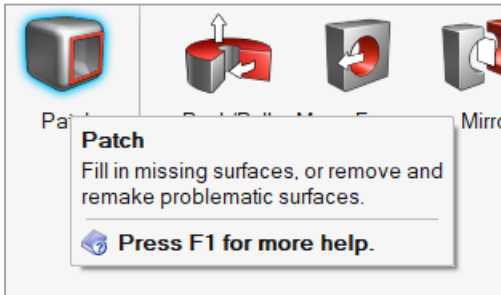


Learn More About Inspire

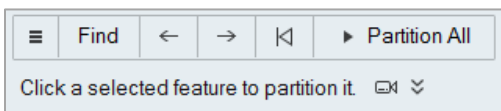
You can learn more about new and existing features in Inspire using the following resources:



In-Application User Assistance

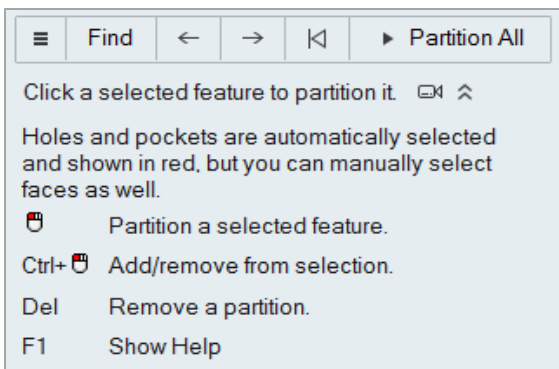
Inspire provides two types of user assistance. **Enhanced tooltips** appear when you hover over icons and other features. They describe what the tool does.



Workflow help appears when you select a tool that opens a guide bar or microdialog. The text prompts you what to do next.

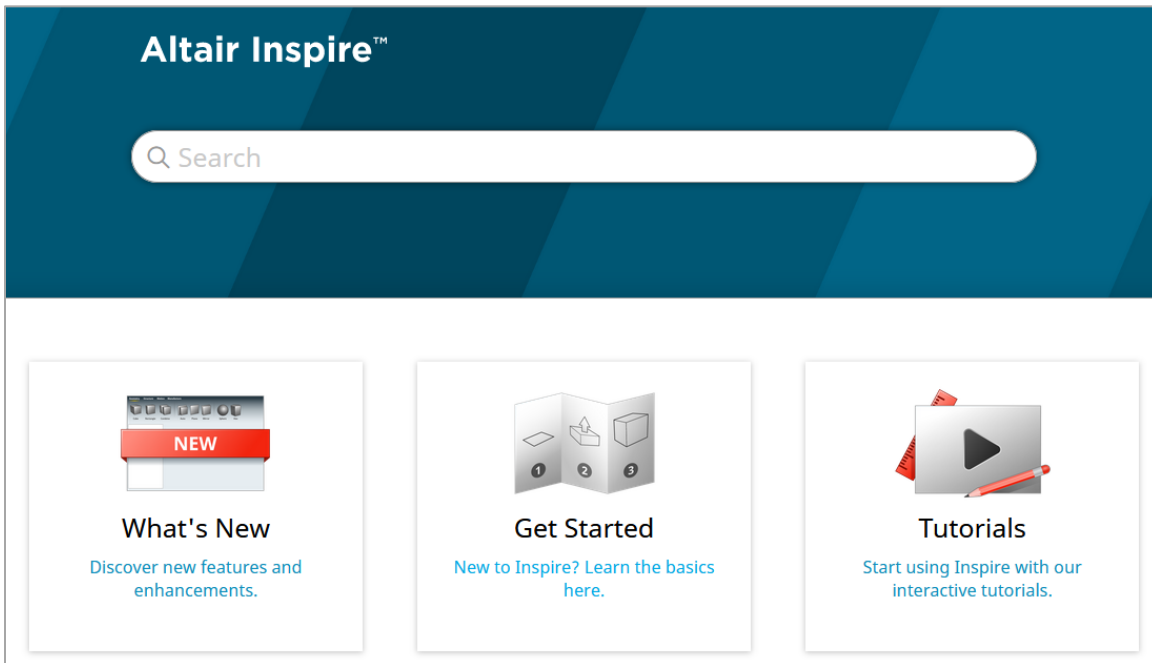


Click  to view additional tips and shortcuts. Some tools also include a video .



Online and Offline Help

Press **F1** or select **File > Help > Help** to view the online help.



You can download an offline version by selecting **File > Help > Download Offline Help**. An internet connection is required to download.

