

 **RELEASE NOTES**

# Monarch Server 2022.0

Report Warehouse (Formally Content Server), Automator, Report Mining Server

# Table of Contents

1. Welcome.....	1
2. Upgrade Considerations .....	1
3. Software Support.....	2
4. Access to Software Updates.....	2
4.1. Release Overview.....	2
5. Release Benefits.....	3
5.1. Installation and Upgrade.....	3
5.2. Deprecated Functionality .....	3
5.3. Altair Monarch Complete SDK/Engine alignment .....	4
5.4. Reduced Risk for Security Breaches .....	4
6. New Features / Changes .....	4
6.1. Platform Administration Improvements .....	4
6.1.1. Ability to Disable Monarch Server Feature UI elements (overriding License) (DST-3007).....	4
6.1.2. Configurator should have basic version control / backup of config.xml file (DST-2467).....	5
6.1.3. Improve DB upgrade logging/documentation (DST-2229) .....	6
6.1.4. Improve Log Clearance Task logic to effect delete immediately (DST-2474) .....	6
6.1.5. Improve performance of Server Status Page (DST-2975) .....	6
6.1.6. Pump CMD. Add VP support (DST-2592).....	6
6.1.7. Improvement to the DatapumpDispatcher / Schedule Integrity (DST-2219) .....	7
6.1.8. Automator – Various Improvements and Bug Fixes.....	7
6.1.8.1. Add 'Advanced' Excel export settings for DPS export (DST-2928) .....	7
6.1.8.2. Automator: Exports - Named Exports (DST-1312).....	8
6.1.8.3. Request to add DPS summaries macro naming convention to add to DPS export configuration (Per DST-2926) (DST-2441).....	8
6.1.8.4. Add XML export type support (DataPrep export) (DST-2922) .....	9
6.1.8.5. Update list of available Summary Exports types for v.18.0 (DataPrep export) (DST-2923) .....	9
6.1.8.6. Add macros support in file/table names for DPS exports (DST-2926) .....	9
6.1.8.7. Add additional settings for Delimited Text and XML DPS exports (DST-2927).....	10
6.1.9. Report Mining Server Improvements - DOC: Create single, complete RMS integration documentation (DST-2484) .....	10
6.1.10. Report Warehouse Improvements - Provide an ability to specify count of retries and interval for checking if file is locking. Add an ability to send an alert on email if file is not unlocked. (DST-2784) .....	10
7. Full List of Fixes / Improvements .....	11
7.1. General Fixes / Improvements (26) .....	11
7.2. Automator Fixes / Improvements (61).....	13
7.3. Report Warehouse (Formally Content Server) Fixes / Improvements (4) .....	17
7.4. Report Mining Server (RMS) Fixes / Improvements (2) .....	17

8. Known Issues .....	18
8.1. Report Warehouse.....	18
8.2. RMS.....	18
8.3. Automator .....	18

# 1. Welcome

Welcome to Altair Monarch Server release 2022.0.

This release is generally available from Nov 4, 2022, following on from the previous 2022.0 release in May 2022.

This document provides an overview of the new features and enhancements provided by Monarch Server in the 2022.0 release. For information on installation and upgrade procedures, as well as details on supported platforms and software requirements, see the separate installation guides that are provided with this release.

## NOTES:

- This is a major release. You must uninstall the currently deployed version and install 2022.0 from fresh, wholly. The Monarch Server database can then be upgraded and relevant settings applied to relevant web.config / config.xml files relevant to the instance. Please ensure these are backed up prior to the uninstall for reference or for regression.
- It is strongly recommended that at minimum, Altair Support / Professional Services is involved with reviewing any upgrade activity prior to the same being carried out. A full backup of the existing deployment must be made and verified before commencing the same to enable regression should it be required. Without a backup, data loss is unavoidable. Altair recommends utilizing our Professional Services to assist you with planning or completing an upgrade activity to minimize downtime, disruption, and risk.

Altair highly recommends upgrading to the latest available release to make use of the latest functionality and feature enhancements, improvements in performance and stability, and to be best prepared for the next release.

Monarch Server 2022.0 is compatible with Monarch Complete/DPS 2022.0.1 and earlier.

- The full version of Datawatch.SDK, which is used in the build, is 18.0.1.31917.
- The full version of Datawatch.DataPrep.Engine, which is used in the build, is 18.0.1.31917.

# 2. Upgrade Considerations

An upgrade operation involves the backup, possible reconfiguration and in the event of a problem the restore/recovery of the application SQL Server database. Potentially also, there is the use of a fuller version of SQL Server as part of the SDK functionality. As part of validating the install/upgrade, there may be a need to perform activities on the SQL Server database instance via Management Studio. For this reason, familiarity with/experience of administering a SQL Server instance and its connectivity/availability/maintenance is required by the person(s) carrying out the upgrade operation.

Before commencing an upgrade, the database should be backed up to allow for regression if problems occur and cannot be resolved within the desired upgrade window. The backup should be taken when the Altair Monarch Server services are wholly stopped. This will involve the Configurator and Agent Services. Where there is more than one server, then the Agent Service on all other servers hosting Modules must also be stopped (refer to your Configurator to determine your server(s) and their hostname(s)).

If using Virtual Servers, then snapshots are also viable, however these should also be taken when the services are stopped to ensure the snapshot is in a clean, restorable state.

Datawatch Server can be deployed such that all components reside on one server, including its SQL Server database. However, you should ensure that for your upgrade, you identify if more than one server requires a snapshot as well as possibly needing to perform a separate SQL Server backup if you are using an external SQL Server instance. #

Consideration should also be given to input and output resources as in some instances, these will need backing up also to facilitate a clean recovery of all required resources in the event of total or partial regression. This might be useful also to assist in testing as elements can be restored post testing to validate, with production data, the effects of said test activities.

## 3. Software Support

Altair will support the current major version of a product release, and one major version behind the latest product version (N -1).

This means supported versions at the time of this Altair Monarch Server release will be 2022.x and 2021.x.

Support includes:

- Response to questions about using product features
- Operational questions
- Guidance on installing new updates, service updates, and patch fixes (Altair strongly suggests that Altair Knowledge Works Professional Services be involved with your upgrades and patches)
- Investigation into operational failures and/or issues

## 4. Access to Software Updates

Customers with an active Maintenance Plan are automatically provided access to the latest product releases via the Customer Support Portal (<https://community.altair.com/community>). This includes major software releases and service releases for updates and fixes.

### 4.1. Release Overview

Altair Monarch Server is a deployment platform for the Monarch based Server products within the Knowledge Works product set.

The server-based platform is scalable from a single-server implementation to a multi-server web distributed system, providing failover, scaling and pooling capabilities accordingly.

Altair Monarch Server consists of 3 products:

- Report Warehouse
  - Traditional Enterprise Server / Content Server functionality
  - Filing, storage, retrieval of TXT & PDF based reports
- Automator
  - Traditional Data Pump Engine
  - Project Editor
  - Visual Process Editor
- Report Mining Server (RMS)
  - 'Overlaying' Report Warehouse (Formally Content Server) functionality on top of an existing Content Management System

Altair Monarch Server 2022.0 continues the following:

- To simplify providing a centralized, browser-based report warehouse with rich data extraction/manipulation/export capabilities
- To enable the automation of data preparation based on Altair Monarch Workspaces and Models
- To enhance the user experience of existing Content Management Systems by enabling richer interactions with compatible report content, enabling rich data extraction/manipulation/export capabilities

Enhancements in the general user experience are added to process definitions/logic, and improvements are made for data connectivity and exports.

Additionally, a few general enhancements are included in this release relating to upgrades, performance & security.

Finally, Veracode Static & Dynamic Scans for vulnerability issues was run to ensure that no significant risks for security breaches were apparent and appropriate remedial work undertaken to address issues found accordingly.

## 5. Release Benefits

This document is divided into the major areas where improvements and additions of new features provide significant benefits to the users of Altair Monarch Server 2022.0.

A summary of changes / new features is as follows:

- Installation & Upgrade
- Deprecated functionality
- Altair Monarch Complete SDK / Engine alignment
- Reduced risk for security breaches
- New features / Improvements

### 5.1. Installation and Upgrade

Support of newer technologies are reflected in this release of Altair Monarch Server 2022.0:

- Support for Windows Server 2022 as platform for Monarch Server 2022.0 And above (DST-2949)
- Upgrade to .NET 4.8, from 4.7.2 (DST-2765, DST-2858)

Any queries in these regards can be directed to Altair Knowledge Works Support (<https://community.altair.com/community>).

### 5.2. Deprecated Functionality

Deprecation of older technologies are reflected in this release of Altair Monarch Server 2022.0:

- Deprecation of x86 / 32-Bit platform support (DST-2859). Customers currently utilizing a 32-bit based deployment of Monarch Server are directed to Altair Knowledge Works Support (<https://community.altair.com/community>) to discuss migration/upgrade options.
- Deprecation of Knowledge Hub / Swarm as input / output option (DST-2956, DST-2679). Customers that are using processes utilizing these inputs / exports and wish to continue with the same are directed to Altair Knowledge Works Support (<https://community.altair.com/community>) to discuss options.

- Deprecation of Panopticon export type.

### 5.3. Altair Monarch Complete SDK/Engine alignment

Altair Monarch Complete 2022.0 was released in Sept. 2022. This was followed with a minor patch release 2022.0.1 in Oct. 2022.

To align with the desktop tools, Altair Monarch Server 2022.0 makes use of the Altair Monarch Complete 2022.0.1 SDK engines accordingly (also referred to as the Monarch Classic and Data Prep Studio SDKs, DST-2885).

It is important to ensure desktop and server components are of a common version to avoid issues with models/projects/workspaces generated in the desktop product and subsequently used in server product(s). The version of the Engine/SDK is provided as part of the Altair Monarch Server major/minor releases and patch release notes. These should be checked to ensure commonality between the products accordingly. Altair Knowledge Works Support can provide further assistance if required

(<https://community.altair.com/community>).

Monarch Server 2022.0 is compatible with Monarch Complete/DPS 2022.0.1 and earlier.

- The full version of Datawatch.SDK, which is used in the build, is 18.0.1.31917.
- The full version of Datawatch.DataPrep.Engine, which is used in the build, is 18.0.1.31917.

### 5.4. Reduced Risk for Security Breaches

Regular review of the software eliminates the risk to have vulnerabilities exposed. The code scans performed on Altair Monarch Server permit deployments to comply with major regulatory requirements and industry standards more easily.

A vulnerability code scan was performed on Altair Monarch Server 2022.0 using Veracode Software Composition Analysis (SCA), which is considered one of the most effective ways to eliminate software flaws. Relevant issues in Altair Monarch Server 2022.0 that were found and addressed/remediated accordingly. Both static and dynamic scans were carried out and some other issues found during internal OWASP reviews were addressed also:

- "Insecure Cryptographic Function" Vulnerability found in Monarch Server Veracode SCA Scan (SSH.Net library) (DST-2977)
- Veracode Dynamic Scan results for 2022.0 (DST-3031)
- Veracode Static Scan results for 2022.0 (DST-3023)
- Vulnerability in SSH.NET component found in OWASP Dependency Track scan for Monarch Server 2022.0 and 2021.1.2 (DST-2852)

Third party components have been updated/replaced to facilitate compliance and ongoing maintenance of the codebase. These can be identified in the application accordingly:

- Update the list of 3-party components and their description on About page (DST-2754)

## 6. New Features / Changes

An overview of major new features / improvements follows.

### 6.1. Platform Administration Improvements

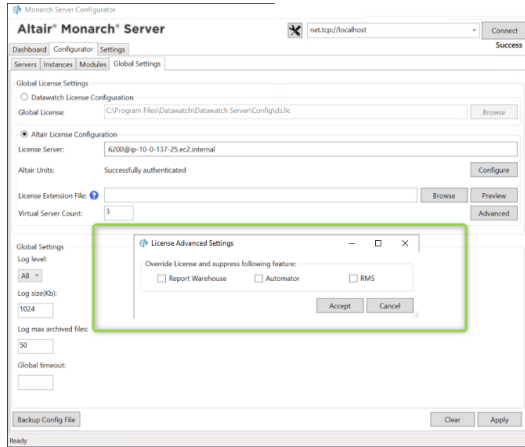
#### 6.1.1. Ability to Disable Monarch Server Feature UI elements (overriding License) (DST-3007)

When Altair License Fulfilment processes a license for Monarch Server, they are not using the separate features for Report Warehouse, Automator and RMS. For some customers, it is using the 'MonarchServer' feature that includes all three.

This means that the instance will present in MSAdmin, with all the options for the 3 features regardless of the modules deployed.

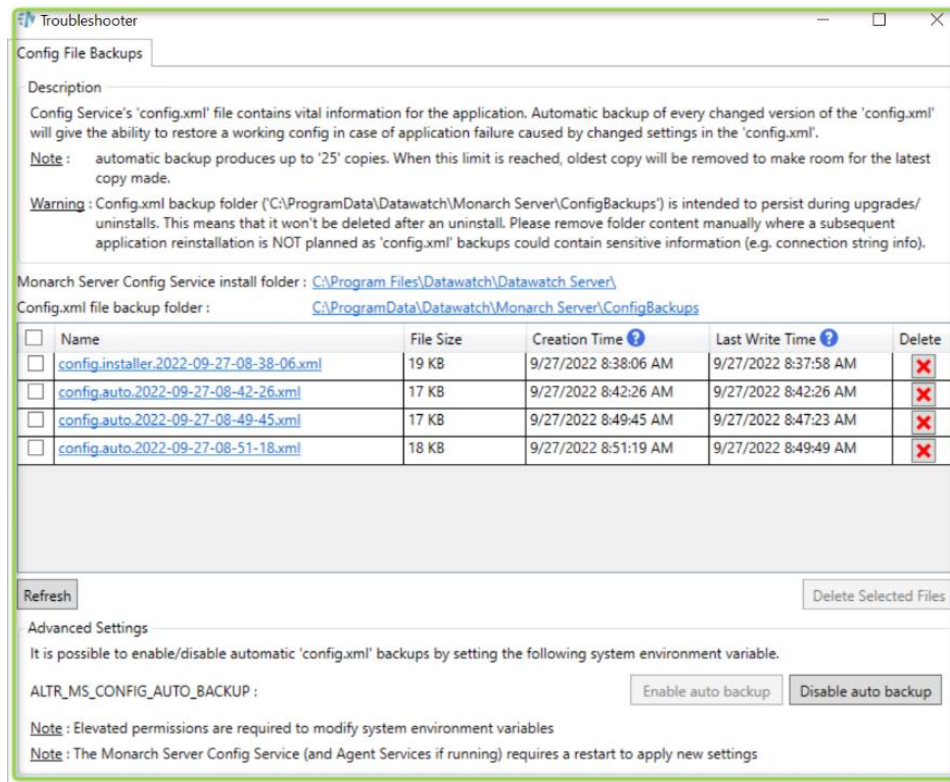
For convenience, it is desired is to provide a facility in the Configurator to suppress the UI elements for each feature and thereby allow for the UI to suppress licensed features where there is no desire to utilize/expose the same.

**NOTE:** This requirement will only be relevant to Units based customers.



### 6.1.2. Configurator should have basic version control / backup of config.xml file (DST-2467)

To assist with troubleshooting/regression/system recovery, the system supports automatic and manual backup of the master config.xml file. New UI options added to the Configurator with options to tailor the settings as required;





### 6.1.3. Improve DB upgrade logging/documentation (DST-2229)

When running a new database creation / existing database upgrade, a log file is recorded in the location 'C:\Users[CurrentUser]\Documents\Datawatch\Log\update\_dwch-net\_db.log'. This records the screen output of the Configurator when the database operation is being carried out.

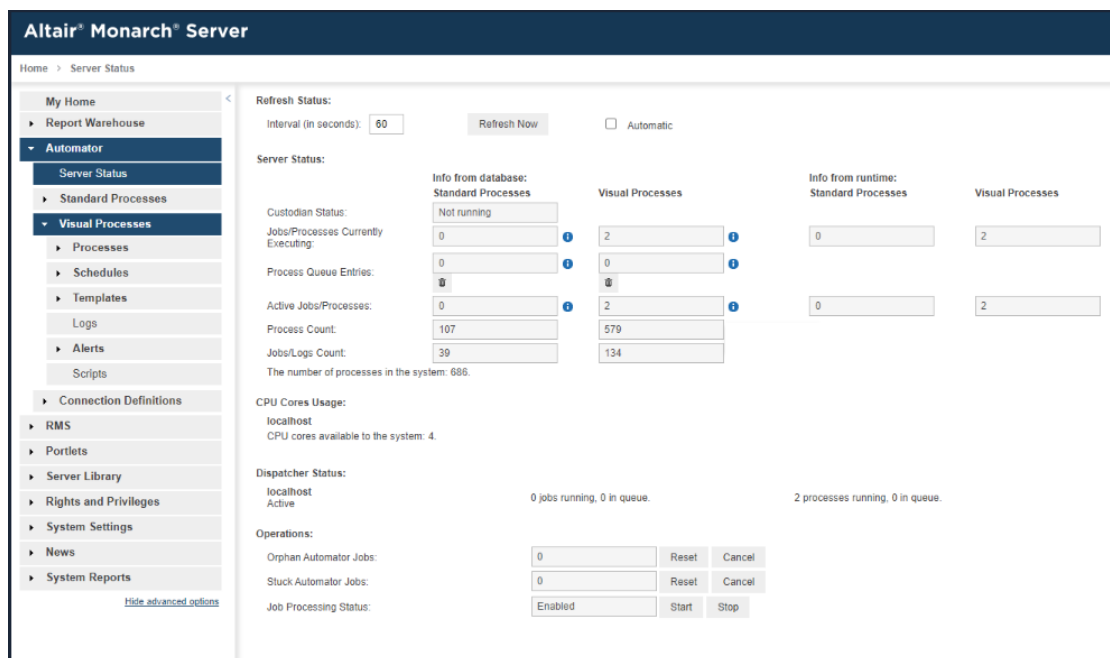
This has been improved to create a dynamic file instead using the notation 'C:\Users[CurrentUser]\Documents\Datawatch\Log\update\_dwch-net\_db\_YYYYMMDDHHMMSS.log' and can be used for various audit / troubleshooting scenarios.

### 6.1.4. Improve Log Clearance Task logic to effect delete immediately (DST-2474)

In prior versions, a scheduled 'Custodian' job was required to assist with Process Log maintenance. This has been removed and Process Log maintenance is actioned immediately. Furthermore, for databases with large volumes of Logs affected, performance of the operation has been improved.

### 6.1.5. Improve performance of Server Status Page (DST-2975)

The Server Status page is an essential part of Automator administration. Performance has been improved to aid in timely visualization of current activity as well as further clarity between jobs that exist as part of the overall schedule logic as well as those being processed by the Dispatcher modules in real time. This can aid troubleshooting of load balancing / distributed deployments.



The screenshot shows the 'Altair Monarch Server' interface. The left sidebar contains a navigation menu with 'Automator' expanded to 'Server Status'. The main content area is titled 'Server Status' and includes a 'Refresh Status' section with an interval of 60 seconds and a 'Refresh Now' button. Below this, there are several data sections:

- Server Status:**
  - Custodian Status: Not running
  - Jobs/Processes Currently Executing: 0
  - Process Queue Entries: 0
  - Active Jobs/Processes: 0
  - Process Count: 107
  - Jobs/Logs Count: 39
  - The number of processes in the system: 686.
- Info from database:**
  - Standard Processes: 2
  - Visual Processes: 0
- Info from runtime:**
  - Standard Processes: 0
  - Visual Processes: 2
- CPU Cores Usage:** localhost, CPU cores available to the system: 4
- Dispatcher Status:** localhost Active, 0 jobs running, 0 in queue, 2 processes running, 0 in queue.
- Operations:**
  - Orphan Automator Jobs: 0 (Reset, Cancel)
  - Stuck Automator Jobs: 0 (Reset, Cancel)
  - Job Processing Status: Enabled (Start, Stop)

### 6.1.6. Pump CMD. Add VP support (DST-2592)

PumpCMD can be a useful asset to aid in the ability to enable a user to run processes without having access to the UI. It can also be used by third party tools to trigger Automator processes as part of an external action. This tool now supports both standard and visual processes:

```

Administrator: Command Prompt
Usage: PumpCmd [-q[uiet]] <command>

where <command> is:
-s[tart] <processname> <connection-name>           Starts the named process.
-r[etry] <trackingID> <connection-name>           Retries the specified process instance.
-r[erun] <JobID> <connection-name>                Reruns the specified job.
-c[ancel] <JobID> <connection-name>              Cancels the specified job.
-custodian run <connection-name>                 Runs the custodian to clean up old jobs and dispose of job logs.
-custodian dispose:<processname> <connection-name> Disposes of the jobs, if any, related to the named process.
-custodian cache:reset <connection-name>         Resets the uri translation cache.
-shutdown <connection-name> [<timeout>]          Shuts down the pump, putting it in a disabled, quiescent state.
-startup <connection-name> [<timeout>]           Starts up the pump.
-stopservice <connection-name> [<timeout>]       Stops the dispatcher service.
-startservice <connection-name> [<timeout>]      Starts the dispatcher service.
-startusingmanifest <manifestFile> <connection-name> Starts the named process with manifest.
-s[tart] -v[isual] <processName> <connection-name> Starts the named visual process.
-startusingmanifest -v[isual] <manifestFile> <connection-name> Starts the named visual process with manifest.
-c[ancel] -v[isual] <trackingID> <connection-name> Marks the specified process cancelled.
-?                                               Shows this usage message.

If an error occurs, a suitable message is displayed in a message box, unless -q[uiet] is specified. In that case the error is reported in the system event log.

The timeout for shutdown, startup, stopservice and startservice commands specifies the maximum amount of time (in hh:mm:ss form) to wait for the indicated operation to complete. The default timeout is 5 minutes.

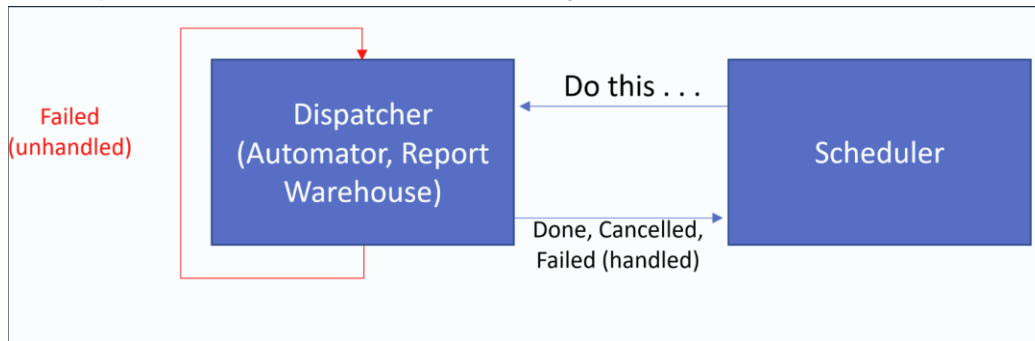
C:\Users\Mikalai_Maskal\Documents\projects\ms\Sources\Datawatch.DataPump\Datawatch.DataPump.PumpCmd\bin\Debug
    
```

### 6.1.7. Improvement to the DatapumpDispatcher / Schedule Integrity (DST-2219)

For Automator, there are various reasons for a process to fail. This can be expected, as part of the process flow and it responding to environmental actions / responses.

There are also unexpected failures based on issues outside of the process flows control but that it is dependant on (e.g. Network resolution, network performance, connection timeout).

To simply illustrate this, we can consider the following:



With a distributed environment, this recovery logic needs to consider individual servers as well as overall instance implications.

Various improvements have been made to ensure that the process schedule / running jobs / pending jobs are correctly monitored and where required, 'healed' to minimise process & job failures accordingly. Additional alerting has been added to ensure visibility to the Administrators of issues that require manual intervention.

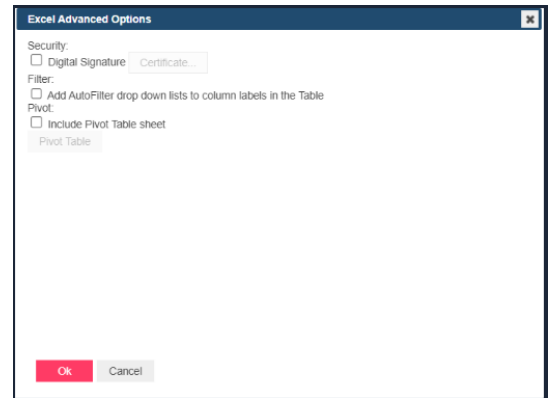
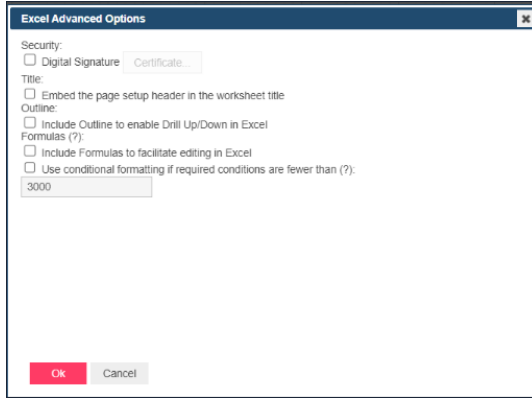
### 6.1.8. Automator – Various Improvements and Bug Fixes

Some highlights for Automator functionality improvements / new features:

- 61 Items listed in section 7.2 containing 18 Bugs, 16 Improvements, 6 New features.

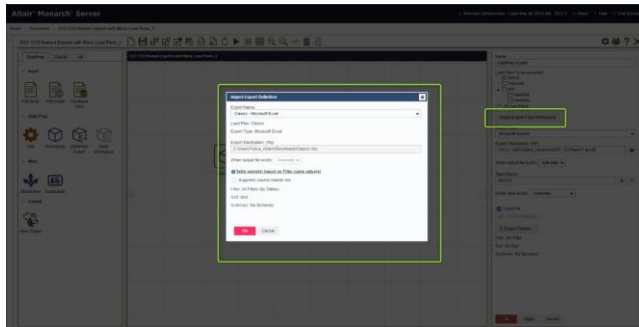
#### 6.1.8.1. Add 'Advanced' Excel export settings for DPS export (DST-2928)

Advanced Excel Export options is available as part of a Visual Process export:



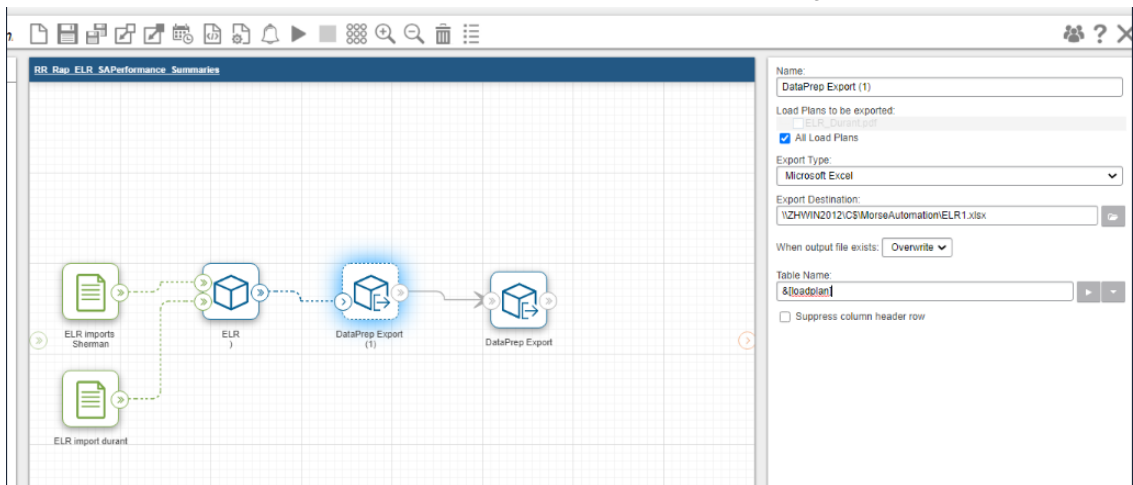
### 6.1.8.2. Automator: Exports - Named Exports (DST-1312)

Named exports defined in the workspace can be imported into the Visual Process:



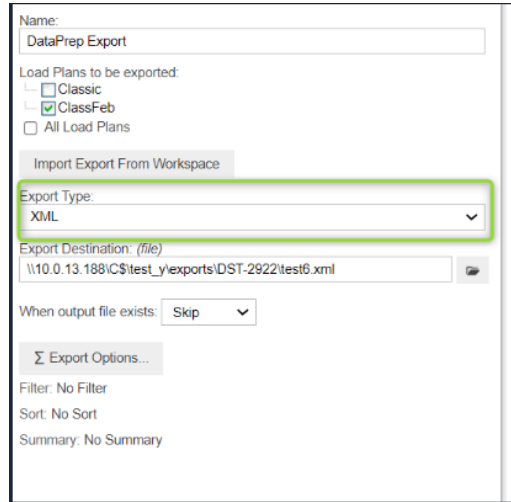
### 6.1.8.3. Request to add DPS summaries macro naming convention to add to DPS export configuration (Per DST-2926) (DST-2441)

It is now possible to incorporate Automator macros as part of an export string;



#### 6.1.8.4. Add XML export type support (DataPrep export) (DST-2922)

It is now possible to specify XML as an export output type;



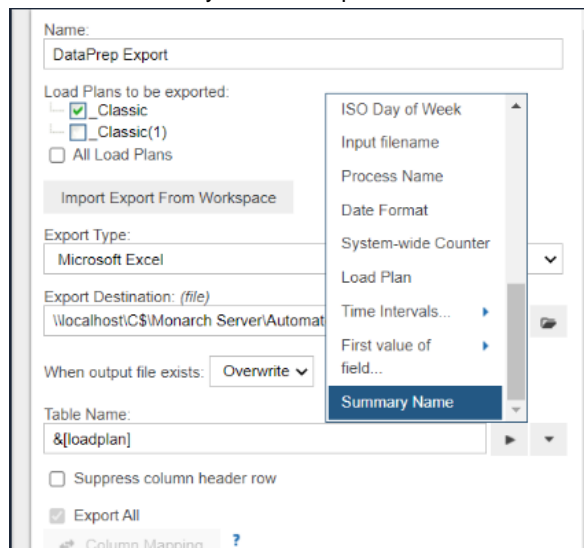
#### 6.1.8.5. Update list of available Summary Exports types for v.18.0 (DataPrep export) (DST-2923)

For summary exports, support has been provided for the following additional export types:

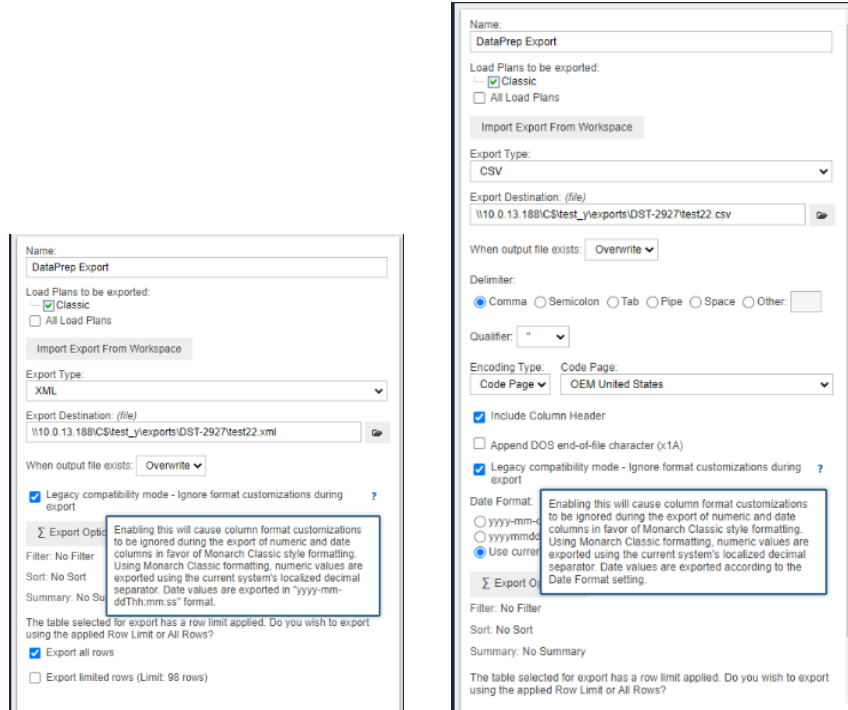
- Access
- XML
- JSON
- Tableau
- XPT
- QVX

#### 6.1.8.6. Add macros support in file/table names for DPS exports (DST-2926)

Classic Process style macro expansion has been added to Visual Process exports:



### 6.1.8.7. Add additional settings for Delimited Text and XML DPS exports (DST-2927)



Note the warning about the removal of formatting as a result of using these options.

### 6.1.9. Report Mining Server Improvements - DOC: Create single, complete RMS integration documentation (DST-2484)

RMS Developer documentation has been consolidated into a single document for simplicity and accuracy.

The updated document will consolidate the following artifacts into a single object:

- Monarch Server RMS Initiation Request.docx
- Monarch Server RMS MECM Interfaces Reference.docx
- Monarch Server RMS and Mobius Integration.docx
- Monarch Server RMS Developer Guide.docx
- Monarch Server RMS Connection to Content Management Systems.docx

The new 'Monarch Server RMS Developer Guide' will be added to the 2022.0 distribution, replacing the previous files and will be available via the Altair Documentation Portal (<https://help.altair.com>) also.

### 6.1.10. Report Warehouse Improvements - Provide an ability to specify count of retries and interval for checking if file is locking. Add an ability to send an alert on email if file is not unlocked. (DST-2784)

It is now possible to configure the lock check timeout and retry settings for filing tasks in Monarch Server Report Warehouse. Note for existing instances, the settings will need to be manually added to the config.xml file.

## 7. Full List of Fixes / Improvements

### 7.1. General Fixes / Improvements (26)

Type	ID	Summary
Altair Monarch Complete SDK / Engine alignment	DST-2885	Update SDK and Engine to 18.0.1
Bug Fix	DST-2710	Single Installer: Repair action error with config.xml
Bug Fix	DST-2806	Improper error while installing Single Installer with incorrect license
Bug Fix	DST-2810	Extra warning about Access 2010 and license appears during installation on a clear machine.
Deprecated functionality	DST-2859	Deprecate 32-bit platform support
Installation & Upgrade	DST-2765	Update Monarch Server from 4.7.2 to .Net 4.8
Installation & Upgrade	DST-2858	Upgrade .NET Framework from 4.7.2 to 4.8
Installation & Upgrade	DST-2949	Support Windows Server 2022
New features / Improvements	DST-1977	Single Installer: web.config shouldn't be changed after upgrade
New features / Improvements	DST-2229	Improve DB upgrade logging/documentation
New features / Improvements	DST-2467	Configurator should have basic version control / backup of config.xml file
New features / Improvements	DST-2470	Monarch.SDK Make creation of indexes on External Lookup tables optional; functional parity
New features / Improvements	DST-2754	Update the list of 3-party components and their description on About page
New features / Improvements	DST-2869	DOC: Installation guides. Update instruction/steps for DB upgrade

Type	ID	Summary
New features / Improvements	DST-2893	DOC: Installation guides. Deprecate 32-bit platform support
New features / Improvements	DST-2965	DOC: Add Note about Deprecate 32-bit platform support
New features / Improvements	DST-2967	DOC: Add info about support Windows Server 2022
New features / Improvements	DST-2971	Content: update default Portlet. Change Datawatch to Altair references
New features / Improvements	DST-3002	DOC: Describe the ability of making backup files of config.xml file
New features / Improvements	DST-3004	DOC: Add a note about the ability of saving web.config while upgrading of Single Installer
New features / Improvements	DST-3007	Ability to Disable Monarch Server Feature UI elements (overriding License)
New features / Improvements	DST-3011	DOC: Describe the ability to override license and suppress components in Configurator
Reduced risk for security breaches	DST-2852	Vulnerability in SSH.NET component found in OWASP Dependency Track scan for Monarch Server 2022.0 and 2021.1.2
Reduced risk for security breaches	DST-2977	"Insecure Cryptographic Function" Vulnerability found in Monarch Server Veracode SCA Scan (SSH.Net library)
Reduced risk for security breaches	DST-3023	Veracode. Cover Static Scan results for 2022.0
Reduced risk for security breaches	DST-3031	Veracode. Cover Dynamic Scan results for 2022.0

## 7.2. Automator Fixes / Improvements (61)

Type	ID	Summary
Bug Fix	DST-2390	When the Verify workspace object is set to 'Stop without error' and the input monitoring is enabled, if verify fails, the process cannot disable trigger, therefore the process continues to run
Bug Fix	DST-2426	Undo changes is not saved or applied
Bug Fix	DST-2700	API: User is redirected to the login page after login
Bug Fix	DST-2878	Mapping warning message has incorrect grammar
Bug Fix	DST-2911	Tableau Server, ODBC, and OLEDB: export passwords should get scrubbed if user chooses not to save credentials.
Bug Fix	DST-2918	Previous executed filter is not reset in OLEDB query when specifying some new filter
Bug Fix	DST-2934	Apply to "All Worksheets" in worksheet design does not evaluate against a new input file
Bug Fix	DST-2940	Drill settings are not applied to the DataPrep Export export file when some summary is selected
Bug Fix	DST-2942	'MaxThreads' setting is not working for VP
Bug Fix	DST-2943	Server Status Page: empty 'Process Queue Entries' when 'Job Processing' is disabled
Bug Fix	DST-2950	SP: Option to add a pivot table to the report is not disabled when 'Digital Signature' is enabled
Bug Fix	DST-2963	Visual Process API run process permissions changed in version 2021
Bug Fix	DST-2993	VPD: Table Name macros (Summary Name & First Value of Field) in DataPrep Export are showing as unknown
Bug Fix	DST-3003	Process export. Performance degradation
Bug Fix	DST-3014	VPD: DataPrep Export existing tables button has unknown tooltip displayed



Type	ID	Summary
Bug Fix	DST-3016	Script error while importing Excel Export from Workspace
Bug Fix	DST-3018	VPD: Browse button of Select Certificate dialog is not working on the second time you open it
Bug Fix	DST-3025	Review validation on SP's 'Script references and imports' tab
Deprecated functionality	DST-2679	BE/FE. Remove KHub integration
Deprecated functionality	DST-2836	DOC: Describe the deprecation of Panopticon export type from Classic Table Export
Deprecated functionality	DST-2956	KnowledgeHub maintenance
New features / Improvements	DST-1312	Automator: Exports - Named Exports
New features / Improvements	DST-2219	Improvement to the DatapumpDispatcher / Schedule (Status validation, Recovery and Healing)
New features / Improvements	DST-2252	Need to add warnings and verification about load plans names when reload or re-select workspace
New features / Improvements	DST-2336	VPD: Add Security (Digital signature) to export to Excel Advanced feature dialog options
New features / Improvements	DST-2384	Improve the log messaging around failure/success of the visual process log update
New features / Improvements	DST-2434	SQL, OleDb, Oracle: Filter methods are written without spaces (EqualTo, GreaterThanEqual)
New features / Improvements	DST-2441	Request to add DPS summaries macro naming convention to add to DPS export configuration (Per DST-2926)
New features / Improvements	DST-2442	Ability to use First Field Value macro in a naming convention for export files and export table names (Per DST-2926)
New features / Improvements	DST-2474	Improve Log Clearance Task logic to effect delete immediately

Type	ID	Summary
New features / Improvements	DST-2528	CLONE - Add .json as input data source in Input file element in Automator
New features / Improvements	DST-2592	Pump CMD. Add VP support
New features / Improvements	DST-2808	Display the ChangeList name in the workspace node property and include ChangeList in the manifest file
New features / Improvements	DST-2825	DOC: Installation guides. Update instruction/steps for Power BI
New features / Improvements	DST-2838	DOC: Describe the ability to append data to the file when exporting to Qlik
New features / Improvements	DST-2842	DOC: Describe the ability to export all filters and all summaries
New features / Improvements	DST-2844	DOC: describe the ability to specify filters and sorts in DataPrep Export item
New features / Improvements	DST-2866	DOC: Describe the alert displayed after another workspace was specified
New features / Improvements	DST-2874	DOC: Describe the ability to import exports from Workspace
New features / Improvements	DST-2888	VPD: add option to apply 'Row Limit' during DataPrep export or not
New features / Improvements	DST-2906	Fix PowerBI export authentication after DataPrep.Engine v.18.0 upgrade
New features / Improvements	DST-2910	DOC: Add new visual process commands into Pump CMD docs
New features / Improvements	DST-2912	DOC: Describe the error that appears to be displayed when external lookup is missing or invalid
New features / Improvements	DST-2922	Add XML export type support (DataPrep export)

Type	ID	Summary
New features / Improvements	DST-2923	Update list of available Summary Exports types for v.18.0 (DataPrep export)
New features / Improvements	DST-2926	Add macros support in file/table names for DPS exports
New features / Improvements	DST-2927	Add additional settings for Delimited Text and XML DPS exports
New features / Improvements	DST-2933	DOC: Describe the ability of exporting to DataPrep Export with row limit
New features / Improvements	DST-2938	DOC: Describe XML export type in DataPrep Export item
New features / Improvements	DST-2941	DOC: Update list of available Summary Exports types in DataPrep Export
New features / Improvements	DST-2928	Add 'Advanced' Excel export settings for DPS export
New features / Improvements	DST-2951	Add the information about used "Row Limit" during DataPrep export
New features / Improvements	DST-2961	DOC: Describe the additional settings for CSV and XML exports
New features / Improvements	DST-2968	DOC: Describe the new security checkbox for .xlsx/.xlsm for Table/Summary Exports in visual processes
New features / Improvements	DST-2974	DOC: Add the new status of the jobs related to the resetting/cancelling of the jobs when DataPumpDispatcher host doesn't work properly
New features / Improvements	DST-2975	Improve performance of Server Status Page (Jobs/Processes Currently Executing, Active Jobs/Processes columns)
New features / Improvements	DST-2982	DOC: Describe the ability to import some change lists to the Workspace's change history
New features / Improvements	DST-2990	DOC: Describe the new procedure of deleting job logs of Standard Processes

Type	ID	Summary
New features / Improvements	DST-2995	DOC: Add new macros in DataPrep export
New features / Improvements	DST-2999	DOC: Describe the meaning of the "Active Jobs/Processes and Jobs/Processes Currently Executing" sections of Server Status page
New features / Improvements	DST-3012	DOC: Add info about new Excel Advanced Options in DataPrep Export

### 7.3. Report Warehouse (Formally Content Server) Fixes / Improvements (4)

Category	ID	Summary
Bug	DST-3042	Dynamic login - ReferenceError: jQuery is not defined
Improvement	DST-2784	Provide an ability to specify count of retries and interval for checking if file is locking. Add an ability to send an alert on email if file is not unlocked.
Improvement	DST-2957	Update content/text for default News
Task	DST-2917	DOC: Describe unlocking functionality when executing filling processes

### 7.4. Report Mining Server (RMS) Fixes / Improvements (2)

Category	ID	Summary
New Feature / Improvement	DST-2484	DOC: Create single, complete RMS integration documentation
New Feature / Improvement	DST-2845	DOC: Describe ability to manage quotes in CSV export in RMS Client

## 8. Known Issues

The following known issues are intended to be fixed in a subsequent patch on Altair Monarch Server 2022.0. The next patch (2022.0.1, tbc) is expected for January 2023.

### 8.1. Report Warehouse

Category	ID	Summary
Bug	DST-2608	CS: Offline Tasks - mail client is NOT opened by clicking on "mail" icon
Bug	DST-2984	News is not re-saved after the button "Clear"
New Feature	DST-1715	Scroll bars are not available in XLS Data

### 8.2. RMS

Category	ID	Summary
Bug	DST-2751	No error message is displayed when error occurs during uploading report/model/template in RMSCClient
Bug	DST-3038	RMS: Data and Summary views - Increase/Decrease Horizontal/Vertical Padding does not applies
Bug	DST-3039	RMS: Dynamic, Data, Summary views - page navigation - centering elements

### 8.3. Automator

Category	ID	Summary
Bug	DST-2169	Export all processes failed if there are different Format and Location at the machine
Bug	DST-2179	VPD: mapping does not work properly for DataPrep Export to Microsoft Access
Bug	DST-2202	CPU 100% when cancel visual process with export to web

Category	ID	Summary
Bug	DST-2237	VPD: Load Plans have reverted to the original filename input after update db
Bug	DST-2238	Cancelled process state was changed to Completed for all processes after update of DB
Bug	DST-2296	In certain process configuration some data prep exports in sequence produce no action and no error :just start and finish
Bug	DST-2367	VPD: Standard Process item - Log Status is empty when the job completed successfully
Bug	DST-2417	Cannot save new Custodian Schedule if name is longer than 27 characters
Bug	DST-2557	VPD: DataPrep Export to Excel - Values have been rounded for "Column Mapping" option. Different results for "Export All" and "Column Mapping".
Bug	DST-2559	Job is completed with "System.NullReferenceException error during distribution of some excel table
Bug	DST-2567	Selected 'Location' in 'Set Destination Path' dialog is not being saved
Bug	DST-2569	Selected extension is not added or replaced in the export file path in File Naming field - Table Export
Bug	DST-2571	System cant retrieve web model information on the properties panel if credentials were entered after Credentials item was connected to Web Model item
Bug	DST-2581	System can't retrieve table's name of database input while using "Process name" macro in path name
Bug	DST-2633	Visual Process manifest fails if the workspace's DOR number in the manifest file does not match the workspace's object DOR number in the visual process.
Bug	DST-2653	It's impossible to open editing SQL plugin window of workspace with several load plans a second time once user has already opened it
Bug	DST-2681	Dropping file to upload and Browse Server options in Server Library > Workspace > Replace Path dialog are not working in Automator v16.1.1
Bug	DST-2704	Process with workspace completes with an error when starting by manifest

Category	ID	Summary
Bug	DST-2721	An error occurs while saving a new process when not all required properties fields are specified
Bug	DST-2748	When unable to delete SQL Server table, "Overwrite" option silently "Appends".
Bug	DST-2776	Validation of the Summary Filter dropdown is Not Working
Bug	DST-2891	SP and VP could start to throw "Access denied" errors for External Lookups
Bug	DST-3024	When a new workspace with Oracle settings uploaded to the server library the Visual process still uses the previous Oracle settings in the Workspace node.
Bug	DST-3027	SP: Macros button is not displayed in "When update match not found" functionality
Bug	DST-3028	SP: "Export all" checkbox stays checked after "Cancel" button is clicked
Bug	DST-3029	SP: [Summary] macro is not displayed in the table name when exporting all summaries by tables
Bug	DST-3030	No information about execution SystemAlertDistributionError alert in the logs of standard process
Bug	DST-3052	Data captured via Excel Worksheet Design (Excel Trapping) and then use it as input in an Automator process will display an error "The given key was not present in the dictionary."
Improvement	DST-1672	VPD: enhance set up Table name for Workspaces
Improvement	DST-2116	Last Started/Last Finished columns are cleared at Bulk Schedules Edits and Schedules pages after re-save Visual Process
Improvement	DST-2234	Enhance Email By Key to read key,email address pair from a delimited file.
Improvement	DST-2376	Improve logs when process export failed: Cannot open input file, if Excel input has Engine: Legacy
Improvement	DST-2398	Automator 15.3.8 Using &[inputname] to dynamically name output file pulls database input and does not allow you to use name of other files
Improvement	DST-2413	Unable to select or upload 2 or more files

Category	ID	Summary
Improvement	DST-2538	Improve monitoring for distributed installation
Improvement	DST-2550	Configure URL Normalization by default
Improvement	DST-2573	Add support Macros for "Export to delimited text file"
Improvement	DST-2582	On Workspace upload, mismatched SDK version should result in clear error message
Improvement	DST-2627	VPD - csv workspace: Add an improvement for the Load Options
Improvement	DST-2733	Add possibility of saving the state of Excel Engine dropdown of Excel Type Workspaces in the Server Library without specifying a New Path
Improvement	DST-2861	Need to add verification of load plans names when new revision of workspace was made in Server Library
Improvement	DST-2931	Add 'Page Setup' settings support for DPS export
Improvement	DST-2947	Avoid unnecessary 'Save Changes Prompt' on VP Designer
Improvement	DST-2959	[process] macro is not working for File on Arrival triggers in Standard and Visual Processes
Improvement	DST-2960	Elegantly controlling the exit node of a script.
Improvement	DST-3019	Import Excel Export From Workspace should have an ability to import Excel Advanced setting
New Feature	DST-2929	Add ability to specify Amazon s3 export destination (DPS export)
New Feature	DST-2930	Add ability to specify Gen2 Azure Data Lake export destination (DPS export)
New Feature	DST-2997	VPD: Add Amazon s3 input item
New Feature	DST-2998	VPD: Add Gen2 Azure Data Lake input item

EOF